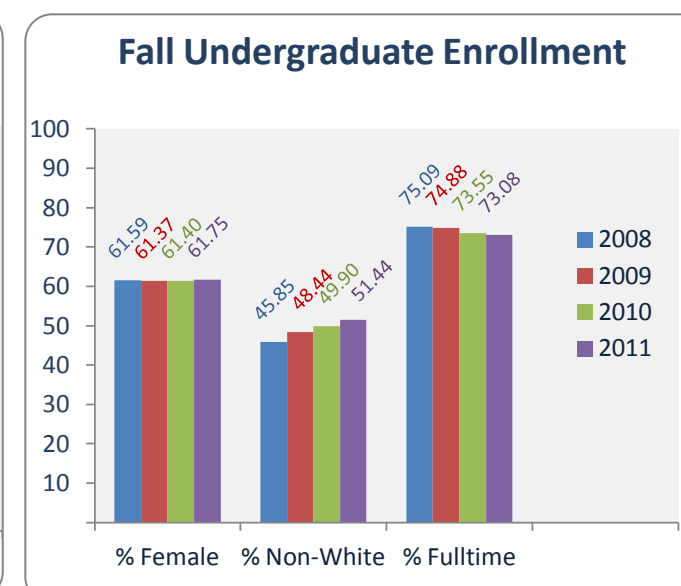
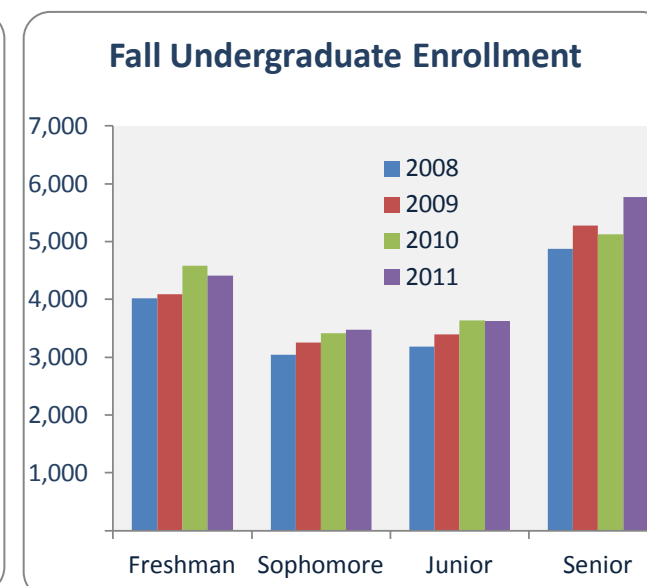
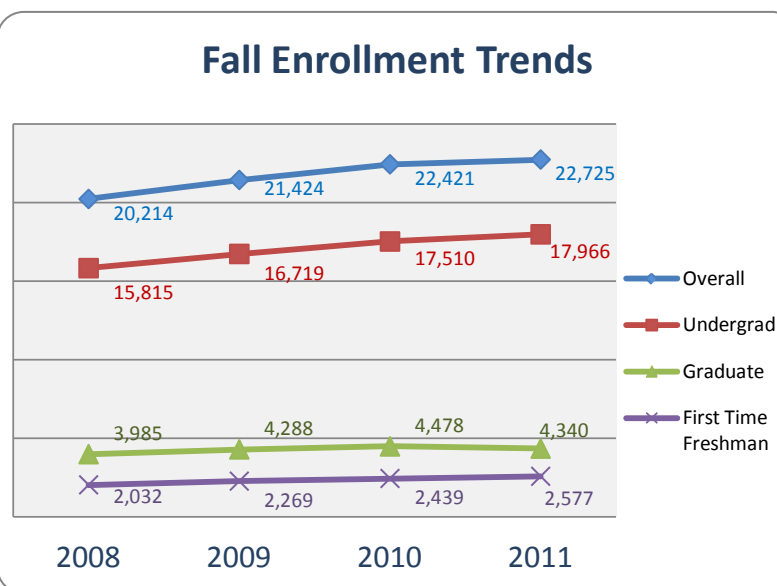


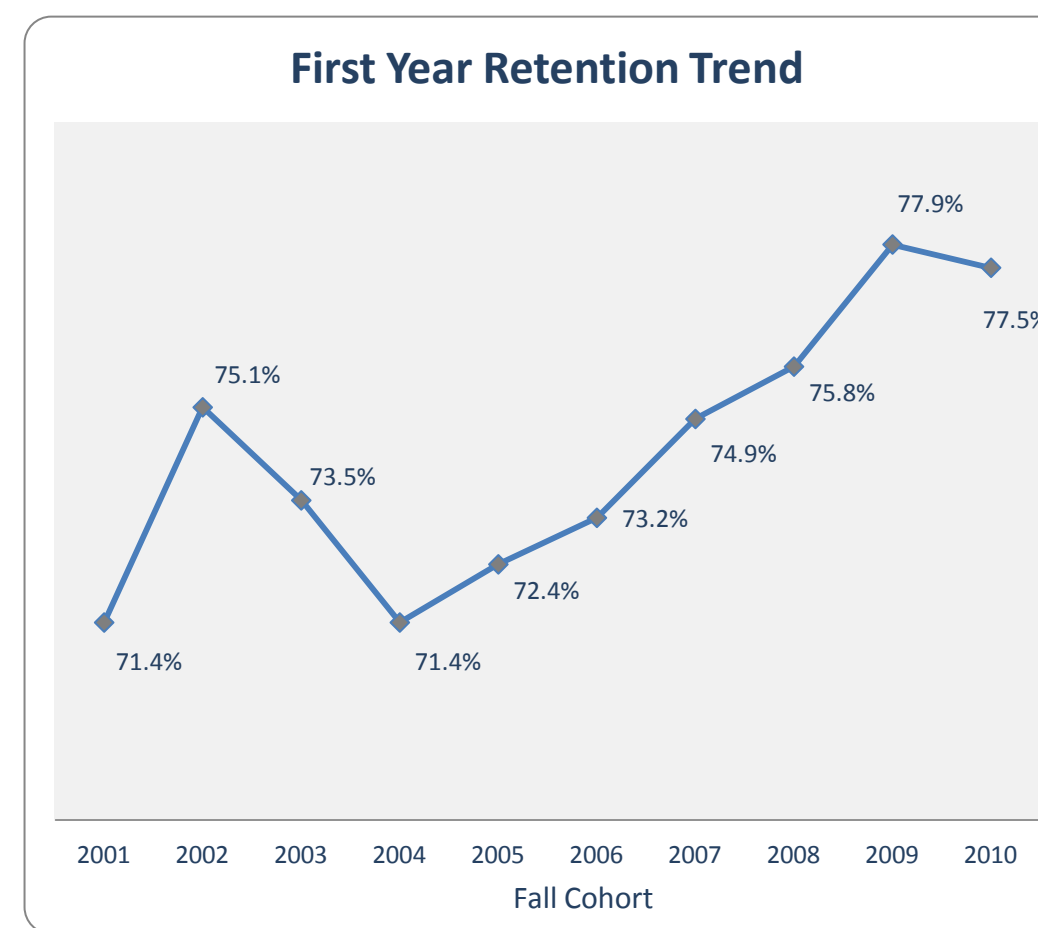
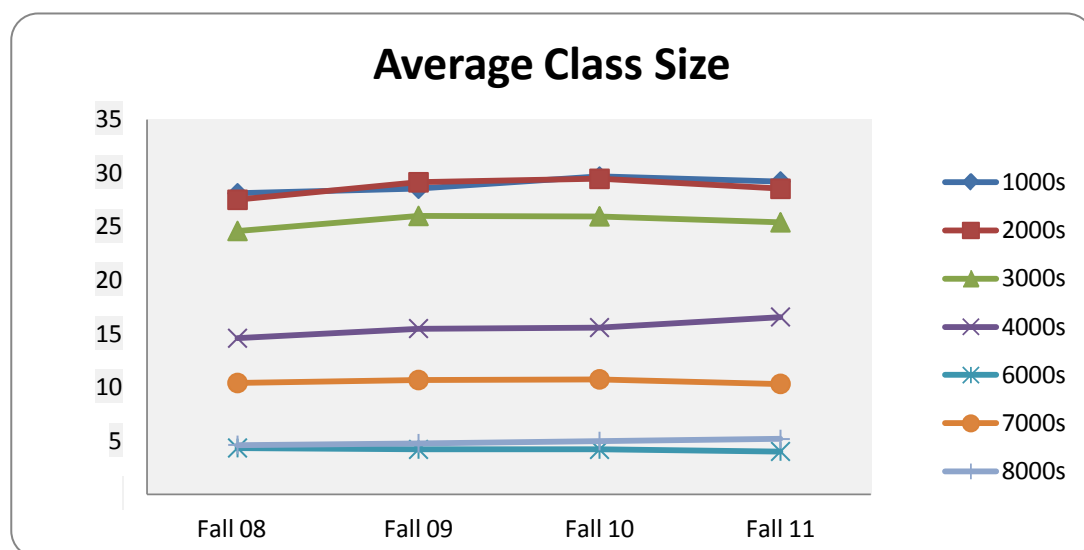
# University of Memphis Facts-at-a-Glance

Enrollment Trends				
	Fall 08	Fall 09	Fall 10	Fall 11
<b>Overall</b>	<b>20,214</b>	<b>21,424</b>	<b>22,421</b>	<b>22,725</b>
Undergraduate	15,815	16,719	17,510	17,966
Graduate(Mast EDS Doc)	3,985	4,288	4,478	4,340
First Time Freshman	2,032	2,269	2,439	2,577
Freshman	4,022	4,088	4,583	4,413
Sophomore	3,040	3,254	3,410	3,476
Junior	3,184	3,395	3,632	3,624
Senior	4,870	5,274	5,121	5,770
Non-Degree UG	702	708	764	683
% Female UG	61.59	61.37	61.40	61.75
% Non-White UG	45.85	48.44	49.90	51.44
% Foreign UG	.95	.87	.81	.78
% Fulltime UG	75.09	74.88	73.55	73.08



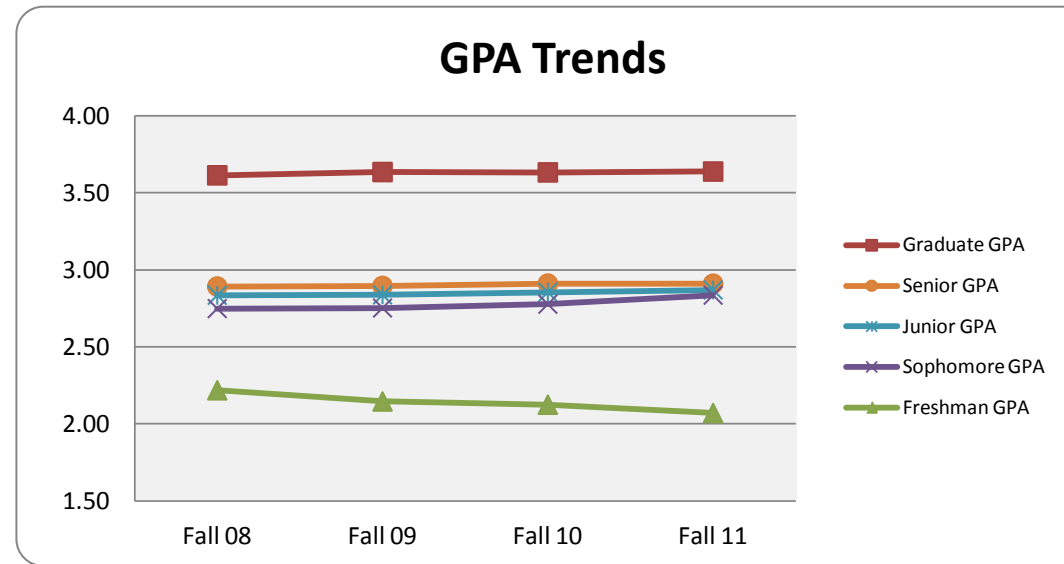
Fall 2011 Enrollment by Ethnicity and Gender				
	Undergrad	Mast & EDS	Prof & Doc	Total
<b>FEMALES</b>				
Unspecified	140	6	4	150
Alaskan	.	.	.	.
American Indian	28	3	1	32
Asian	222	55	19	296
Black	5333	715	142	6190
Hispanic	289	56	8	353
White	4737	1220	456	6413
Pacific Islander	16	2	.	18
Multi-Race	244	39	10	293
Non-Resident Alien	71	98	72	241
<b>MALES</b>				
Unspecified	98	2	18	118
Alaskan	.	1	.	1
American Indian	18	7	4	29
Asian	218	38	14	270
Black	2145	226	74	2445
Hispanic	172	20	10	202
White	3988	734	436	5158
Pacific Islander	5	2	.	7
Multi-Race	152	19	8	179
Non-Resident Alien	69	131	106	306

Average Class Size				
Course Level	Fall 08	Fall 09	Fall 10	Fall 11
1000s	28.11	28.53	29.67	29.21
2000s	27.50	29.14	29.45	28.52
3000s	24.59	26.00	25.96	25.40
4000s	14.58	15.48	15.57	16.56
6000s	4.34	4.20	4.20	4.01
7000s	10.40	10.68	10.74	10.32
8000s	4.62	4.78	4.98	5.17



# University of Memphis Facts-at-a-Glance

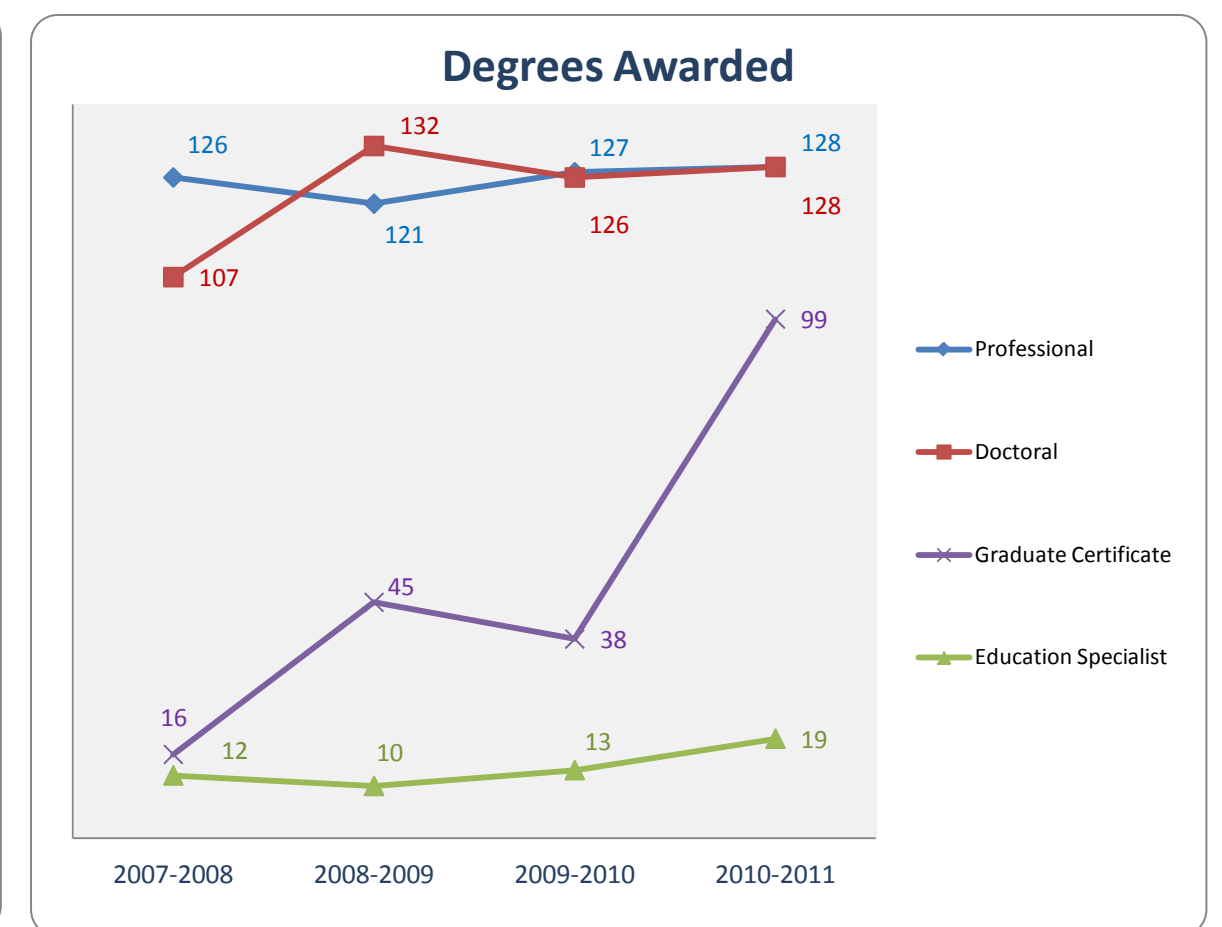
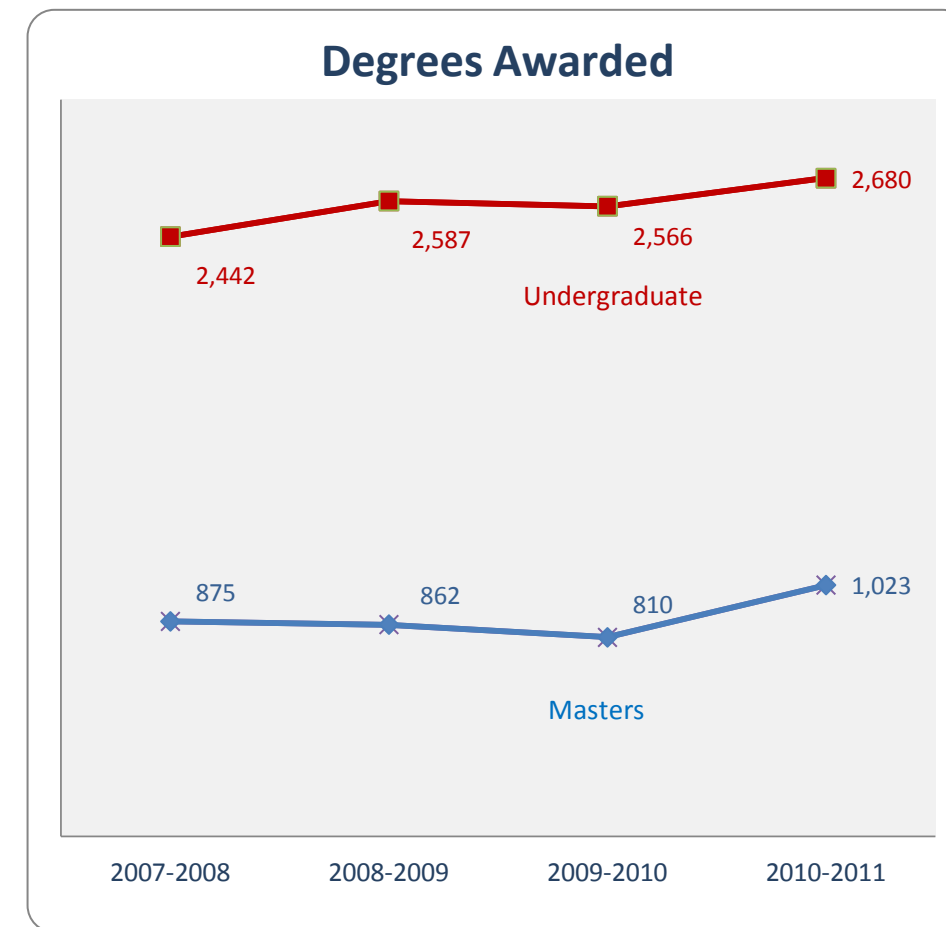
Mean Cumulative GPA				
	Fall 08	Fall 09	Fall 10	Fall 11
UG GPA	2.73	2.73	2.72	2.75
Graduate GPA	3.61	3.63	3.63	3.64
Freshman GPA	2.22	2.15	2.12	2.07
Sophomore GPA	2.75	2.75	2.78	2.84
Junior GPA	2.83	2.84	2.85	2.87
Senior GPA	2.89	2.90	2.91	2.91
Non-Degree UG GPA	2.90	3.16	3.10	3.23
Female UG GPA	2.76	2.76	2.75	2.78
Non-White UG GPA	2.55	2.54	2.55	2.58
Foreign UG GPA	2.93	2.85	3.00	3.10
Fulltime UG GPA	2.76	2.76	2.75	2.78
UG HS GPA	3.07	3.08	3.09	3.11
Law LSAC GPA	329.81	331.16	332.39	332.76



Mean Test Scores				
	Fall 08	Fall 09	Fall 10	Fall 11
GRE Verbal	470.72	471.78	470.56	470.07
GRE Quantitative	548.86	550.33	551.20	551.04
GMAT Total	547.57	540.95	532.13	529.41
GMAT Verbal	31.20	31.12	30.95	30.13
GMAT Quantitative	34.42	33.50	32.59	32.68
GMAT Writing	44.02	43.68	44.58	43.31
Law LSAT	155.43	155.40	155.54	155.38
Law LSAC Index	27.29	26.93	26.94	26.68

Fall 2011 Graduate Student Yield Rate			
	Applied	Accepted	Enrolled yield Rate(%)
Graduate	3205	975	1250
Professional	298	222	146
			48.99

Degrees Conferred - Degree Year 2010/2011				
	Undergrad	Mast & EDS	Prof & Doc	Certificates
<b>FEMALES</b>				
Unspecified	14	13	1	2
Alaskan	.	.	.	.
American Indian	8	.	.	.
Asian	51	16	3	2
Black	636	158	17	24
Hispanic	37	12	2	2
White	866	409	87	24
Pacific Islander	1	.	.	.
Multi-Race	23	9	1	3
Non-Resident Alien	10	44	6	13
<b>MALES</b>				
Unspecified	12	2	4	.
Alaskan	.	.	.	.
American Indian	6	2	2	.
Asian	32	12	2	.
Black	227	44	9	2
Hispanic	27	8	1	.
White	701	260	110	20
Pacific Islander	.	1	.	.
Multi-Race	14	2	3	.
Non-Resident Alien	15	49	8	7



Fall 2011 Faculty Profile				
	Non-Tenure	Ten-Track	Tenured	Total
Full Time	293	178	464	935
Part Time	596	.	.	596
Total	889	178	464	1531